

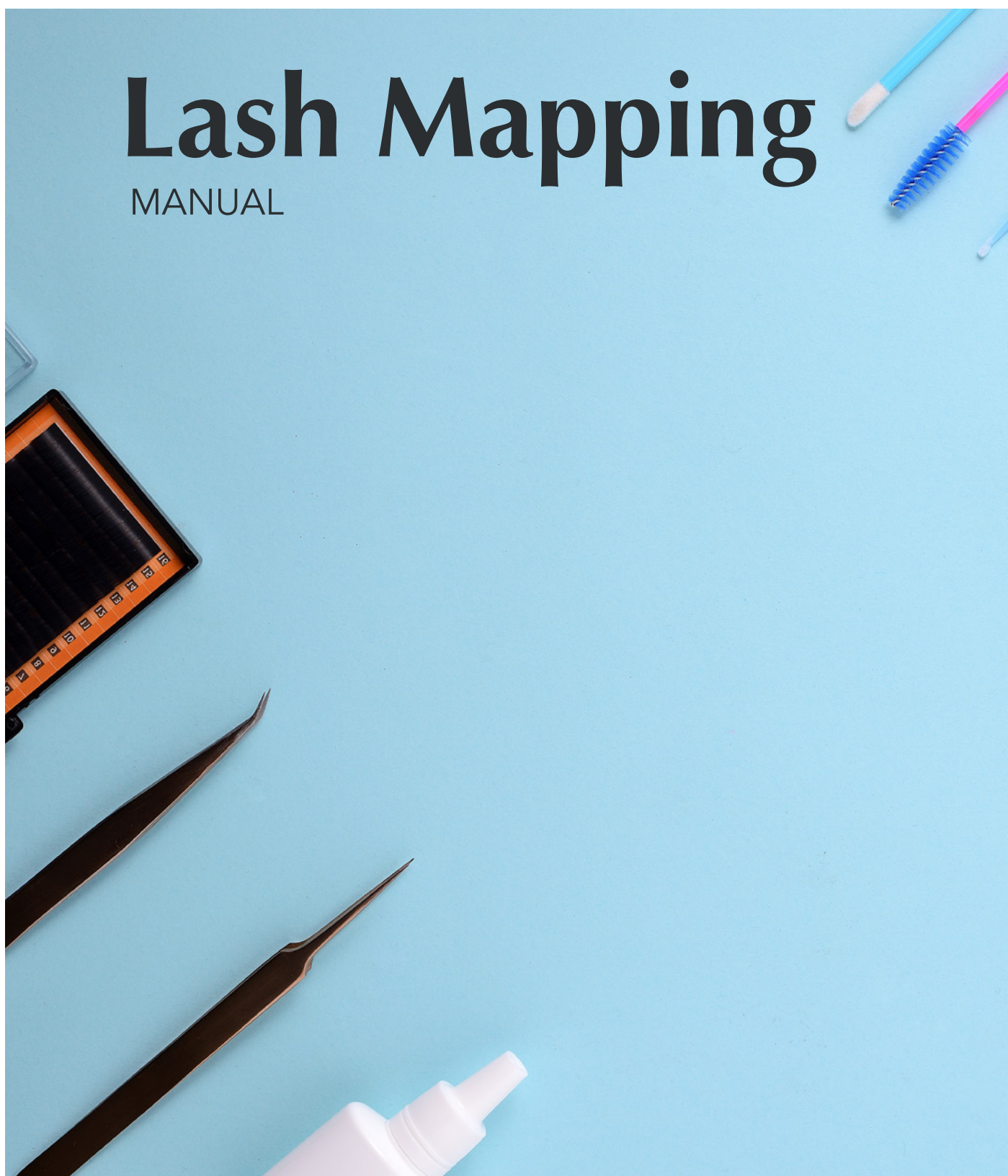


BEAUTY

TRAINING

Lash Mapping

MANUAL



Lash Mapping

INTRODUCTION

This course is designed for lash technicians who want to upgrade their knowledge and skills to enable them to create bespoke sets to suit their clients.

LEARNING OBJECTIVES

1. - What is lash Mapping?
2. - Popular lash map styles
3. - Lash mapping templates
4. - Different eye shapes and which style is best suited
5. - Choosing the correct lash
6. - Mapping procedure
7. - After-care



WHAT IS LASH MAPPING?

Lash mapping is an important and useful tool when used during an eyelash extension treatment.

With the use of lash mapping you are able to offer your clients a range of different styles and make the style bespoke to their eye shapes and preferences.



A lash map is a bespoke template which guides the technician where to place the length of each lash across the lash line to achieve different looks, whether your client has requested a natural or more glamorous look. Lash mapping is also important to use when you are working with different eye shapes to enhance and balance.

All you need to be able to map your sets is a pen and some gel lash pads! You simply draw different sections of lengths and curls on the pads and off you lash!

Ensure that you draw your map after cleansing and priming, or else this could smudge your markings. Some lash technicians prefer to use a coloured pen, rather than black so it can be seen clearer amongst the lashes.

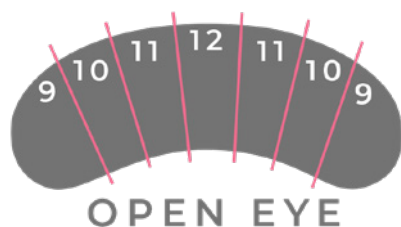


Some 'ready-made' lash map templates are available to buy online, we wouldn't advise using these as there is no 'one size fits all' when it comes to eyes. You will achieve a much better look when you hand draw your own map on the gel lash pads.

POPULAR LASH MAPPING STYLES:



Natural: This style is the most traditional for eyelash mapping. It follows contours of your original length but just longer. This is the right style to choose for someone who wants a natural look, if they want something a bit more glamorous, this isn't the one to choose!



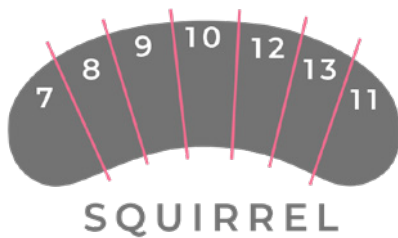
Open Eye: This style accentuates the centre of the eye by adding length toward the centre of the lash line, tapering down at each end creating a symmetrical graduation. The perfect choice to open up narrow shaped eyes.



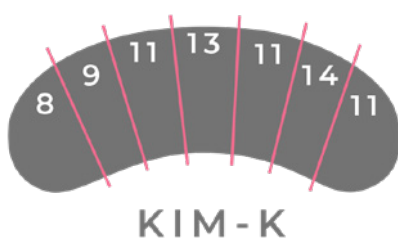
Cat eye: This is a great choice for a more glam look. The lashes begin at the inner corner at their shortest length and gradually get longer toward the outer corner. The difference in length is around 50% more by the time we reach the outer corner, this gives the appearance of a flick at the ends.



Baby Doll: This style is a cross between the natural and an open eye style. The Doll Eye is a full look which is created by length right across the eyelid with the longest lashes being focused on the middle of the eye.



Squirrel: This look is created by starting short and gradually getting longer with the halfway point being the longest length and then gradually getting shorter again.



Kim-K: This is one of the most popular lash styles. The Kim K look involves placing 'spikes' (longer lengths) in different sections of the eye to create a wispy set.

EYE SHAPES AND BEST SUITED MAPPING

Being a lash technician, you will know that every client has different shaped eyes and we need to create a look that best suits them. Here are some eye shapes that you may come across and what lash mapping you can do to best enhance and balance that shape:

Almond eyes

This eye shape is considered the most proportionate eye shape. Almond eyes can support nearly any lash map styling.

Hooded eyelids

When working with hooded eyelids you will need a map to open the eye. The most flattering is to have longer lengths in the middle of the eye. Be mindful of which curl you use, so that it doesn't curl back into the lid. *Suggestion - Open eye, squirrel eye or doll eye*

Rounded eyes

When working with eyes that are a round shape, going for a less curl on the lash is better and placing the longer lengths towards the outer edge of the eye can create more of an almond shape. If the wrong map was used, it could give your clients a surprised expression!. *Suggestion - Cat eye, Kim K eye or squirrel eye*

Downturned eyes

This eye shape points downwards at the outer edges and need volume on the outside to create a lift and flick appearance, this will help to balance the shape of the eye. *Suggestion - Cat eye or squirrel*

Close set eyes

This is where the spacing between these are eyes is less than one eye space apart. Attention needs to be drawn towards the outer corners of this style to help balance the look. *Suggestion - Cat eye or squirrel eye*

Deep set eyes

These are eyes that are set back in the eye sockets, so these eyes require a styling that will bring the eye out. You will need to again be mindful of the lengths and curls that you use so that they don't irritate the clients eyelids, this will be different form client to client. *Suggestion - Open eye or Doll eye*

CHOOSING THE CORRECT LASHES

Single lid eyes

This eye shape is most common in Asian women. Generally the natural lashes are straighter so going for a lash curl that has flare will be more dramatic. Try to match the curl as closely as you can to enhance retention whilst still giving drama. *Suggestion - Cat eye, squirrel eye or Doll eye*

Protruding eyes

You should try and maintain shorter length lashes when working on protruding eyes, avoid long lengths. *Suggestion - Shorter lengths and assess the general shape as well as the protrusion*

The length of the eyelash extensions that you choose will determine what kind of look you want to achieve.

You will need to be mindful of the clients eye shape and length of their natural lashes. Never apply lashes that are 50% longer than the clients natural lashes.

Also take a look at the thickness of the clients natural lash, clients with very fine lashes would need to have extensions applied that are closer to the natural length. The thickness of the extension should also be altered for fine lashes, using a 0.15mm thickness is more preferred over a 0.2mm thickness for example.

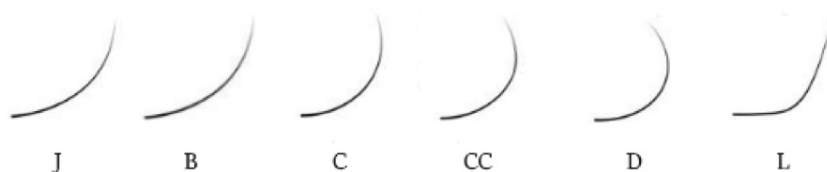
Follow the mapping guide to see where the lengths go, your maps will differ from client to client in lengths but they will be ascending and descending at the same points.

Remember, you length you choose, may not always be a longer length extension than the clients natural lash when you are creating a new lash line style. More volume can be added with shorter length lashes and longer length may not always look better on your client.

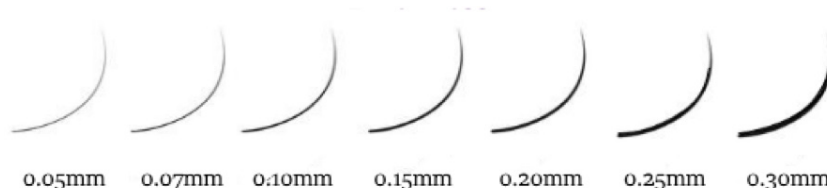
One more thing to bear in mind is if your client wears glasses, it will drive them crazy if they brush against the lens on every blink!

The curl of the lash will determine the look. Take into consideration the look you are trying to achieve and the shape and size of the eye, eyelid and brow.

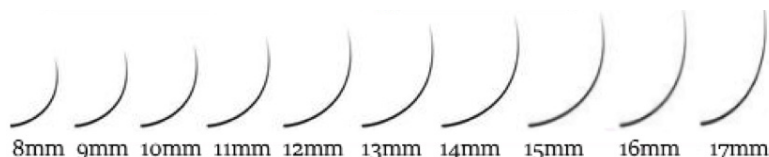
DIFFERENT LASH CURLS



DIFFERENT LASH THICKNESS



DIFFERENT LASH LENGTHS



MAPPING PROCEDURE

1. Carry out a consultation with your client to find out what type of look they want to achieve. Educating your clients on the names and looks of styles can be helpful to both your client and yourself. Look at the clients eye shape and size to help you choose your mapping style.
2. Cleanse your clients eye area and apply the gel lash pads, ensuring all bottom lashes are held down out of the way. Always apply pads a little way away from the waterline. Use a little bit of tape over the top of your pad if needed to better fit the eye and cover bottom lashes.
3. If you need to apply a primer, do this before marking your map as it could smudge your markings.
4. With a pen (coloured is preferable) mark your sections and write your lengths using your chosen map style. Sections and lengths may differ slightly in size due to your clients eye shape and size.
5. Isolate and start applying your lashes, giving enough space and time for drying and to avoid clumping.

6. Fill the lash line until your set is complete.
7. Ensure your glue is dry before asking the client to open their eyes, using a fan or similar.
8. Show your client their wonderful bespoke set.
9. Fill out record card. Note down which lash map style you used and the length, thickness and curl, so you are ready for infills.

AFTER-CARE

1. Don't let lashes get wet for at least 24 hours
2. Brush and cleanse lashes daily
3. Avoid oily products on or around the eye area
4. Do not pick or pull at your lashes
5. Have regular infills every 2-3 weeks.



Lash Mapping Test

1. What is lash mapping?
2. Why is it encouraged to use a coloured pen for mapping?
3. What eye shapes would an open eye map be best suited to?
4. What map style is recommended for downturned eye shapes?
5. What map style is recommended for deep set eyes?
6. What is the importance of applying shorter length lashes in the inner corners of the eye?
7. What could happen if you applied an open eye map to a rounded eye shape?
8. What thickness of lash extension is best suited to finer natural lashes?
9. Would you cleanse and prime before or after drawing on your mapping guide?
10. List three aftercare tips.

Please email your answers back to info@bcbeautytraining.co.uk

Upon completion you will be emailed a certificate. If you require a paper copy, there will be an additional charge of £5.00 inc. postage.